

7600 SERIES COORDINATORS TEMPLATE

IMPORTANT: INSTALL COORDINATOR BEFORE ANY OTHER HARDWARE EXCEPT HINGES.

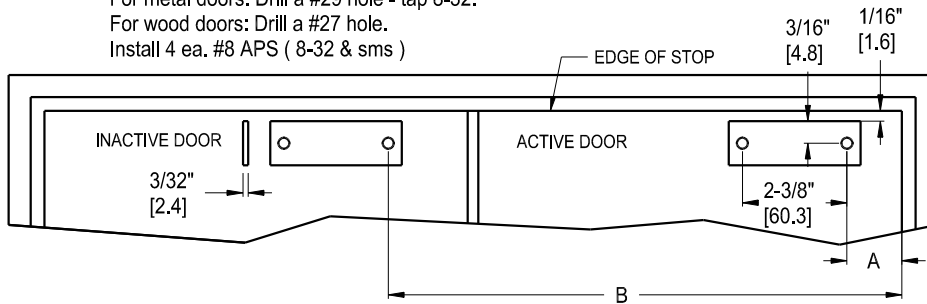
STEP 1 : Close doors against stops and locate active and inactive door strikes as shown below.

For metal doors: Drill a #29 hole - tap 8-32.

For wood doors: Drill a #27 hole.

Install 4 ea. #8 APS (8-32 & sms)

REVERSIBLE - RH(LHRB) SHOWN



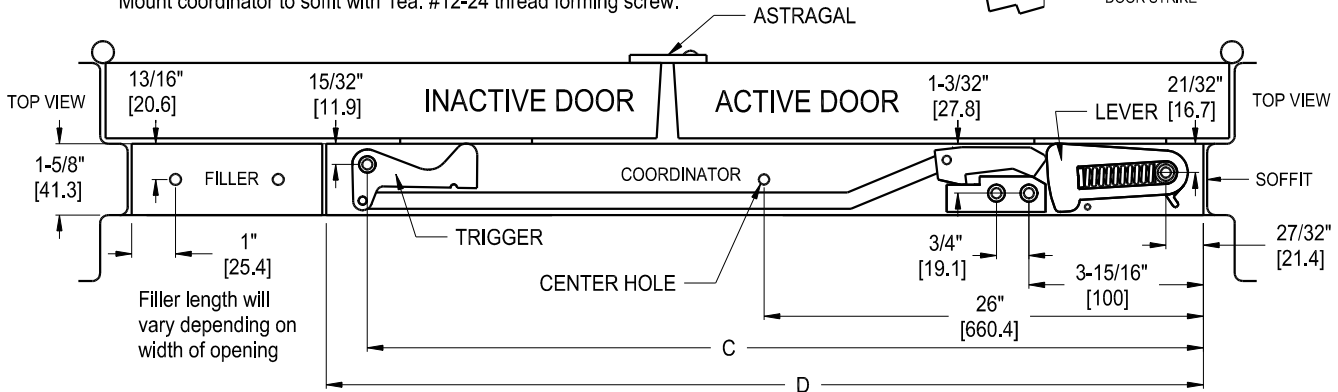
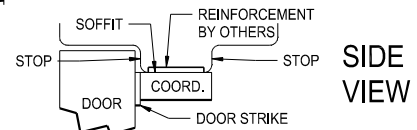
COORDINATOR MECHANISM	A	B
32" (N-632) [812.8]	1-1/4" [31.8]	27-1/2" [698.5]
42" (NX-642) [1066.8]	1-1/4" [31.8]	37-1/2" [952.5]
52" (652) [1320.8]	1-1/4" [31.8]	47-1/2" [1206.5]
60" (L-660) [1524]	1-1/4" [31.8]	55-1/2" [1409.7]
66" (XL-600) [1676.4]	1-1/4" [31.8]	61-1/2" [1562.1]
72" (XXL-600) [1828.8]	1-1/4" [31.8]	67-1/2" [1714.5]

STEP 2 : Depress trigger and then depress the lever and hold.

Locate coordinator against soffit and strike plates as shown below.

Mark center hole location and drill a #10 hole.

Mount coordinator to soffit with 1ea. #12-24 thread forming screw.



STEP 3 : Close doors to ensure coordinator is resting against both door strike plates.

Mark the 4 remaining mounting hole locations.

Drill #10 pilot holes.

Install 4 ea. #12-24 thread forming screws.

COORDINATOR MECHANISM	C	D
32" (N-632) [812.8]	31" [787.4]	32" [812.8]
42" (NX-642) [1066.8]	41" [1041.4]	42" [1066.8]
52" (652) [1320.8]	51" [1295.4]	52" [1032.8]
60" (L-660) [1524]	59" [1498.6]	60" [1524]
66" (XL-600) [1676.4]	65" [1651]	66" [1676.4]
72" (XXL-600) [1828.8]	71" [1803.4]	72" [1828.4]

STEP 4 : Fillers (if supplied) fill the void between the coordinator and soffit.

They mount the same as the coordinator.

STEP 5 : Test operation by opening both doors and allowing the active door to close first. The active door should be held open until the inactive door closes.

If the coordinator overrides causing the active door to close prior to the inactive door **ADJUST DOOR CLOSER SPEEDS FIRST.**

If the coordinator still overrides, adjust the tension on the override mechanism by using a #1 Phillips head screwdriver and turning the screw in the lever end clockwise. SEE FIGURE A

NOTE: If the lever and or trigger does not return to the extended position after both doors are opened, the mounting screws thru the lever and or trigger may be too tight.

Back screws off 1/4 turn until the lever and or trigger return to the extended position.

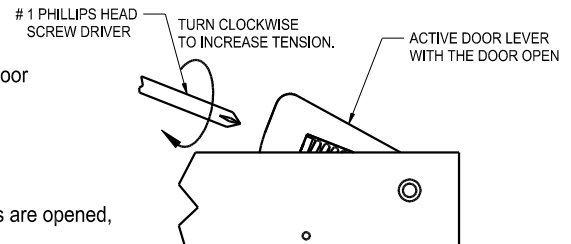


FIGURE A

Dimensions in [] denotes millimeters

NOTE: Due to occasional product changes, please ensure your template is current by checking our website at www.burnsmfg.com or call us at 814-833-7428. Burns Mfg. is not responsible for obsolete template errors.

Date: 4/10 - Rev. 1