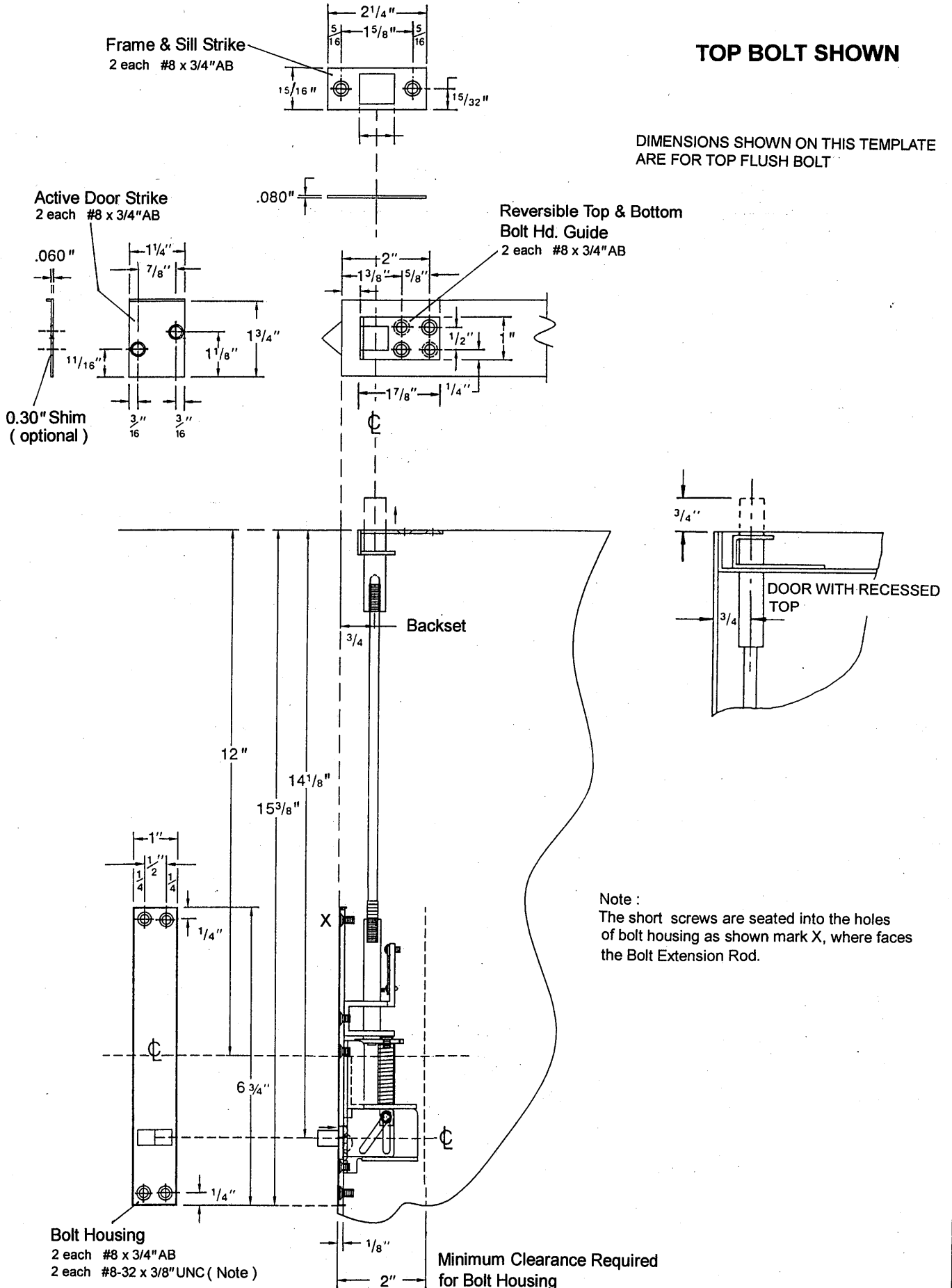


# AUTOMATIC FLUSH BOLTS ( FOR METAL DOORS APPLICATION )

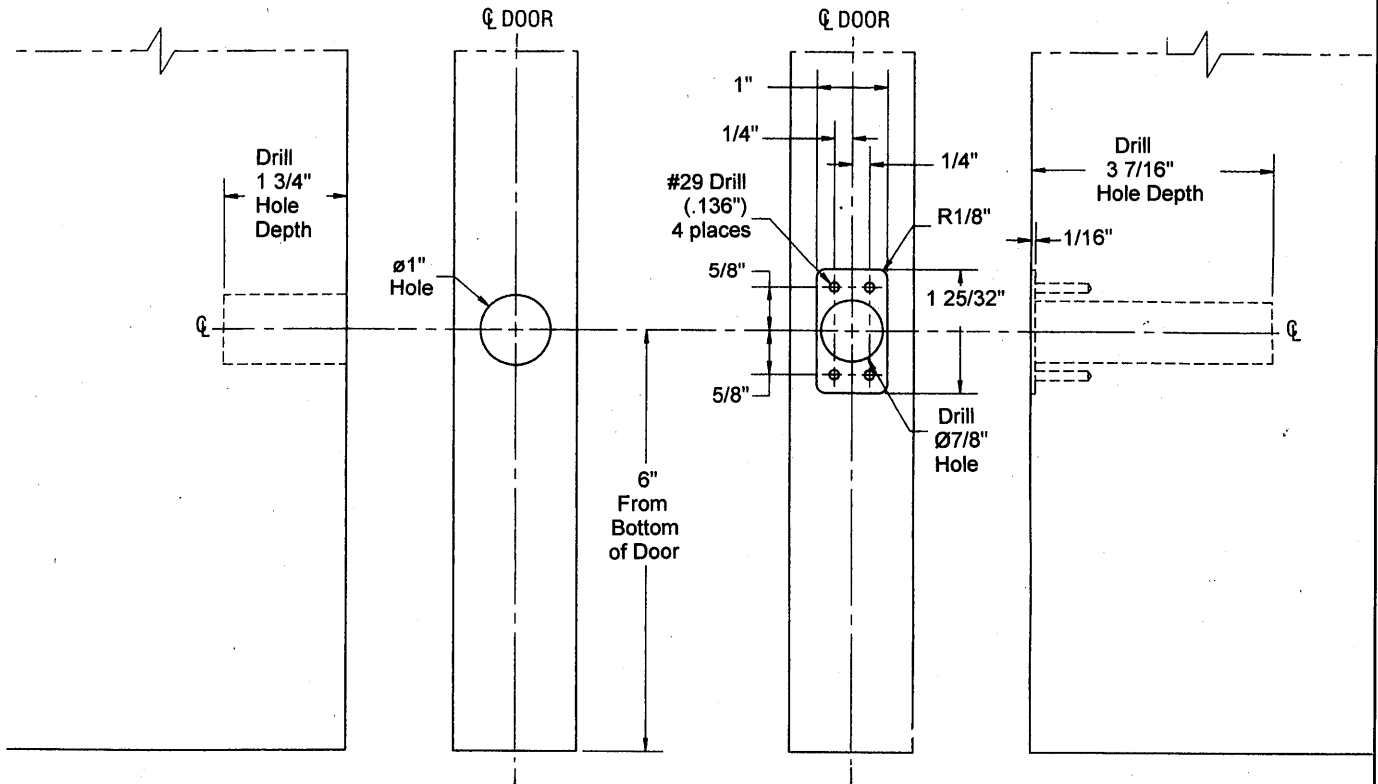
**TOP BOLT SHOWN**

DIMENSIONS SHOWN ON THIS TEMPLATE ARE FOR TOP FLUSH BOLT



DIMENSIONS SHOWN ON THIS PAGE  
ARE FOR FIRE LATCH BOLT USE.

**BOTTOM BOLT SHOWN**

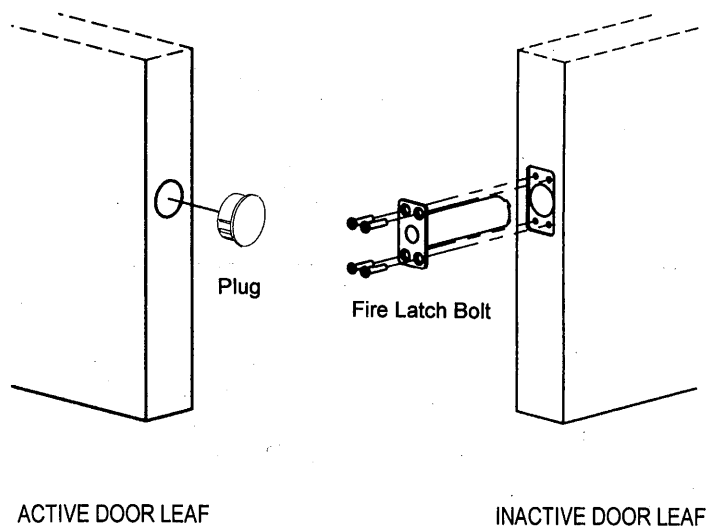


STRIKE HOLE PLUG  
ON ACTIVE DOOR LEAF

FIRE LATCH BOLT HOLE  
ON INACTIVE DOOR LEAF

### Fire Latch Bolt Mounting Instructions

- A. Insert fire latch bolt into the hole in the inactive door leaf, then secure it by provided screws.
- B. Insert plug into the 1" DIA. strike hole as shown.



**CAUTION:**

The fire latch bolt will project during a fire.  
Do not cover with any edge mounted door hardware.