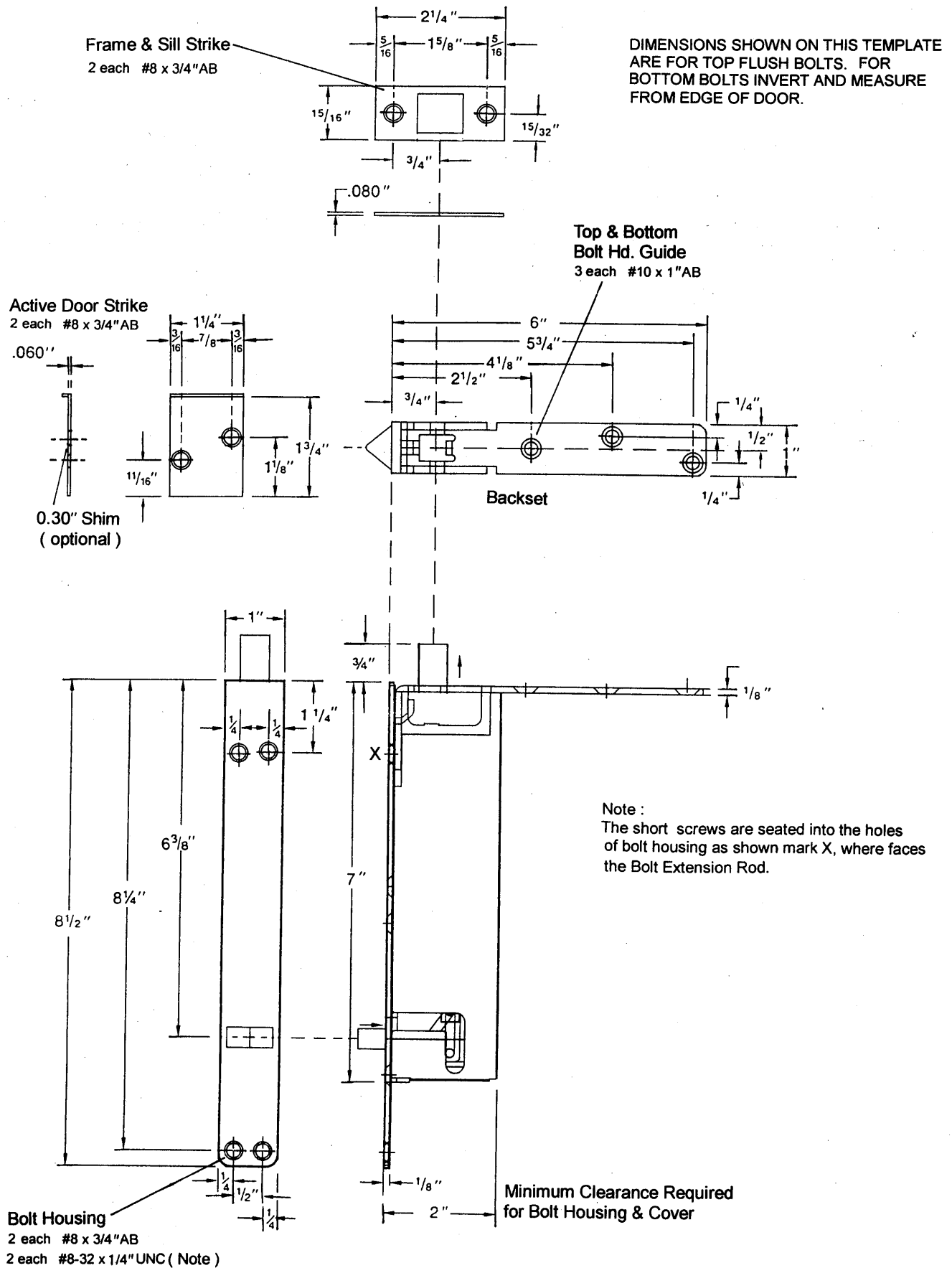


AUTOMATIC FLUSH BOLTS (FOR WOOD DOORS APPLICATION)



DIMENSIONS SHOWN ON THIS TEMPLATE ARE FOR TOP FLUSH BOLTS. FOR BOTTOM BOLTS INVERT AND MEASURE FROM EDGE OF DOOR.

0.060"
0.30" Shim (optional)

Backset

Note :
The short screws are seated into the holes of bolt housing as shown mark X, where faces the Bolt Extension Rod.

Minimum Clearance Required for Bolt Housing & Cover

SCREW DETAILS : #8-32 x 1/4" UNC - flat countersunk head machine screw, total 2 pcs.
#8 x 3/4" AB - undercut flat countersunk head, dual purpose machine/tapping screw, total 6 pcs.
#10 x 1" AB - flat countersunk head tapping screw, total 3 pcs.