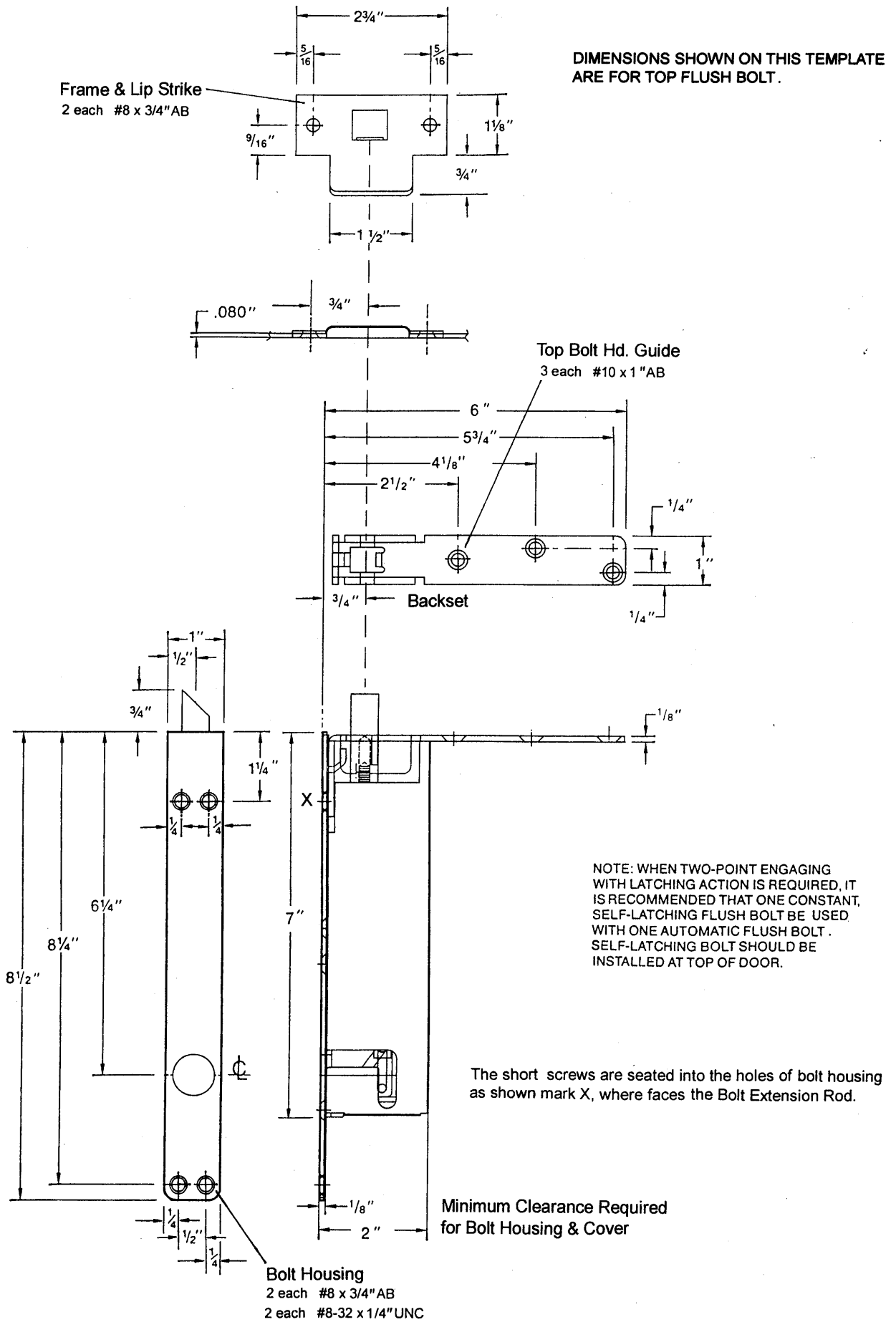


CONSTANT LATCHING FLUSH BOLT (FOR WOOD DOORS APPLICATION)



SCREW DETAILS : #8-32 x 3/8" UNC - flat countersunk head machine screw, total 2 pcs.
 #8 x 3/4" AB - undercut flat countersunk head, dual purpose machine/tapping screw, total 4 pcs.
 #10 x 7/8" AB - flat countersunk head tapping screw, total 3 pcs.

AUTOMATIC FLUSH BOLTS (FOR WOOD DOORS APPLICATION)

