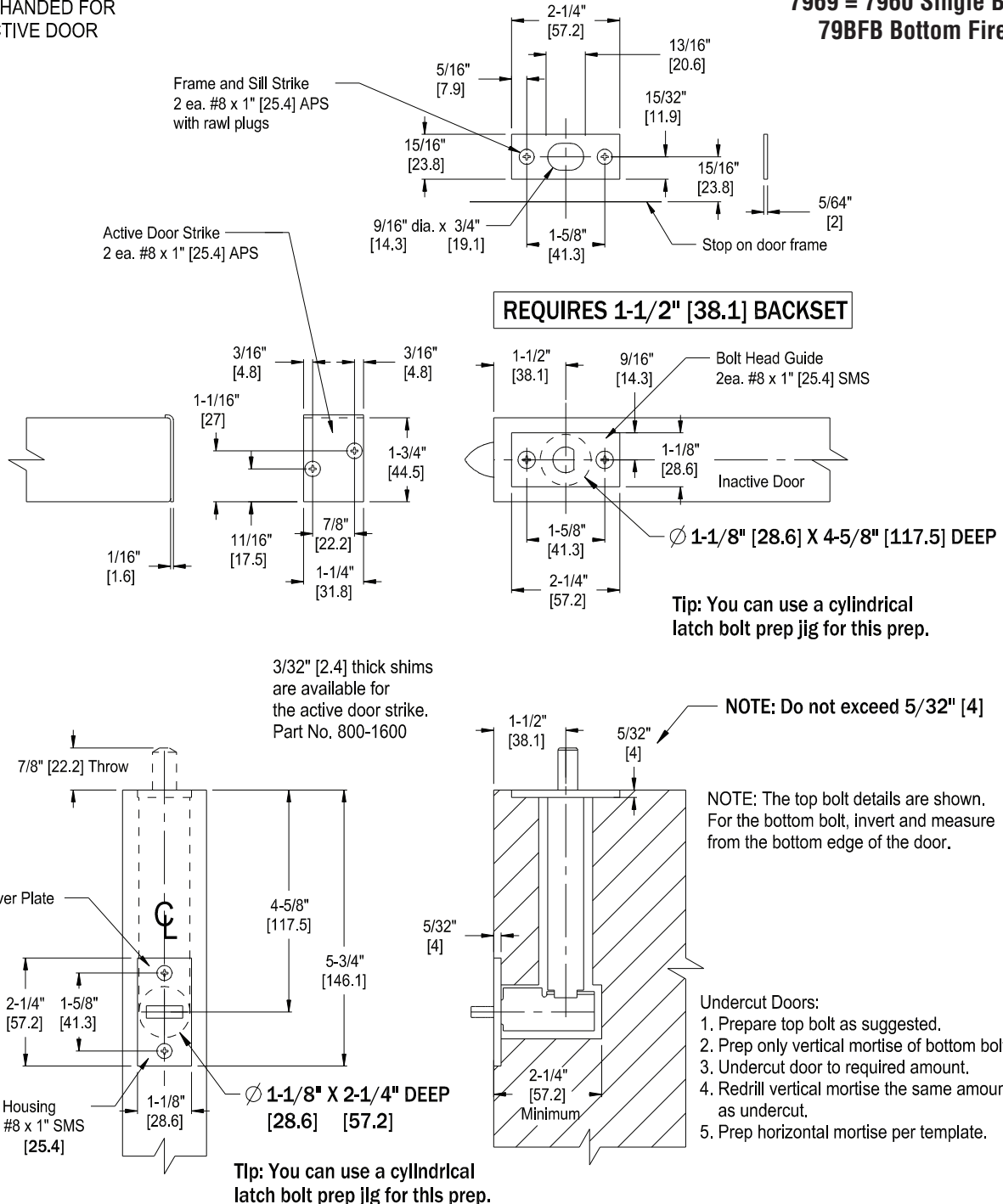


7969 AUTOMATIC FLUSH BOLT TEMPLATE

NON - HANDED FOR
INACTIVE DOOR

**7969 = 7960 Single Bolt &
79BFB Bottom Fire Bolt**



SEE REVERSE SIDE FOR INSTALLATION

PATENTED

NOTE: Due to occasional product changes, please ensure your template is current by checking our website at www.burnsmfg.com or call us at 814-833-7428. Burns Mfg. is not responsible for obsolete template errors.

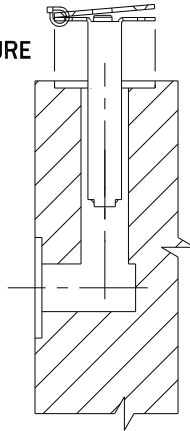
Date: 5/18 - Rev. 2

7969 AUTOMATIC FLUSH BOLT INSTALLATION

Bolt Installation

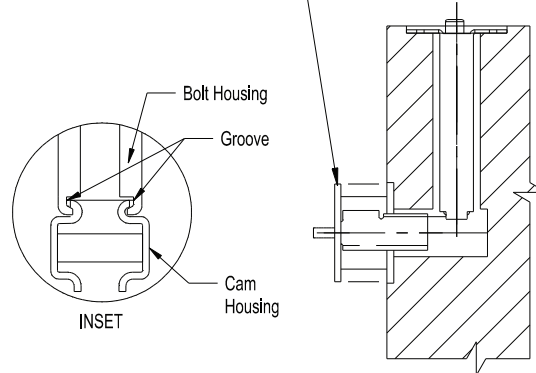
1. Remove Tie and install Bolt Housing

DO NOT SECURE



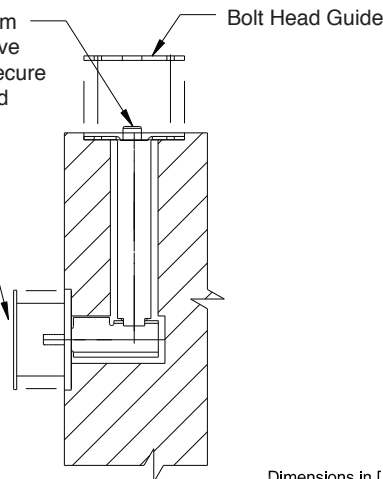
7969 = 7960 Single Bolt & 79BFB Bottom Fire Bolt

2. Install Cam Housing into grooves in Bolt Housing. See inset.
TIP: Check bolt engagement prior to fully installing by gently twisting Cam Housing. If it rotates, it is not engaged into the Bolt Housing.

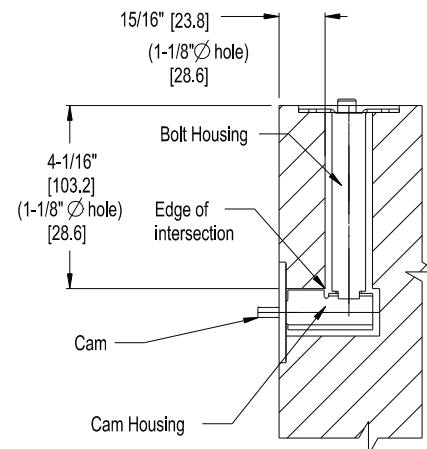


3. Adjust Bolt Head from 0" to 1/16" [1.6] above Bolt Head Guide. Secure Bolt Head Guide and Bolt Housing with 2 ea. #8 APS

4. Install Cover Plate over Cam Housing and secure with 2 ea. #8 APS.



NOTE: If prepped holes are not perpendicular cam may bind. Break edge of the intersection of the 2 holes or file the edge of the vertical hole to ensure the noted dimension.



Dimensions in [] denotes millimeters

79BFB Bottom Fire Bolt Installation

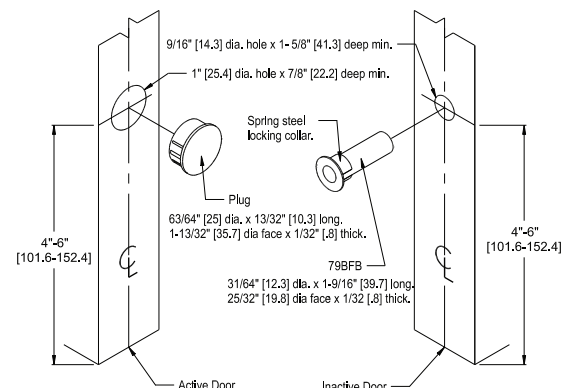
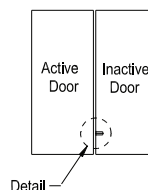
Inactive Door

1. Measure 4" - 6" [101.6 - 152.4] from bottom of the Inactive Door.
2. Drill a 9/16" [14.3] dia. hole x 1-5/8" [41.3] deep for 79BFB.
3. Install 79BFB by striking squarely with a hammer.

Active Door

1. Drill a 1" [25.4] dia. x 7/8" [22.2] deep hole for Plug at the same height as the 79BFB.
2. Install plug in door by striking with a hammer.
3. For zero clearance doors, counterbore 1-1/4" [31.8] dia. x 1/16" [1.6] deep for plug.

IMPORTANT: The 79BFB will project during a fire. Do not cover with any edge mounted door hardware.



NOTE: Due to occasional product changes, please ensure your template is current by checking our website at www.burnsmfg.com or call us at 814-833-7428. Burns Mfg. is not responsible for obsolete template errors.

Date: 5/18 - Rev. 2