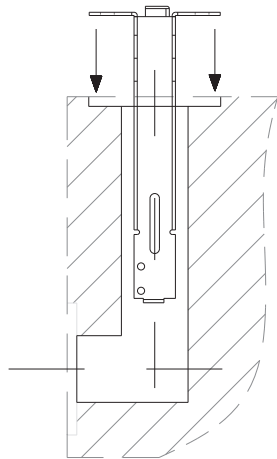


FLUSH BOLT INSTALLATION INSTRUCTIONS

The flush bolts are intended for use with classified hollow-metal steel stiffened doors rated up to and including 3 hours; wood/plastic-covered composite doors rated up to and including 1-1/2 hours; and wood core doors rated 20 minutes. For applications of more than 1-1/2 hours, hollow-metal steel stiffened doors shall be provided with an overlapping astragal.

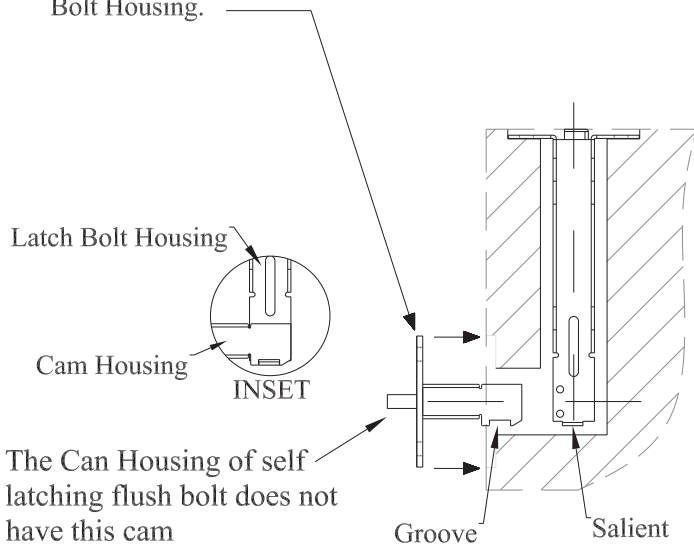
1. Put Latch Bolt Housing into its hole vertically.

DO NOT SECURE



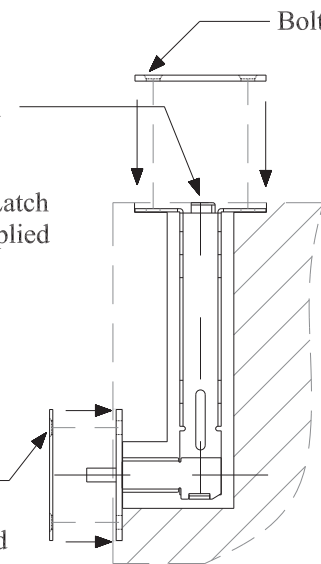
Note: The dimension details of the automatic flush bolt or self latching flush bolt, see another attachment.

2. Put Cam housing into hole horizontally. Have both grooves on the Cam Housing inset on the salients on Latch Bolt Housing. Check latch bolt engagement prior to fully installing by gently twisting cam Housing. If it rotates, it is not engaged into the Bolt Housing.

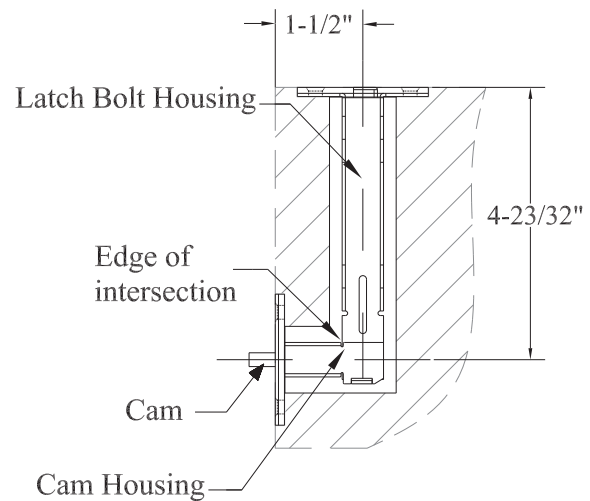


3. Adjust Bolt Head from 0" to 1/16" above Bolt Head Guide. Secure Bolt Head Guide and Latch Bolt Housing with supplied two mounting screws.

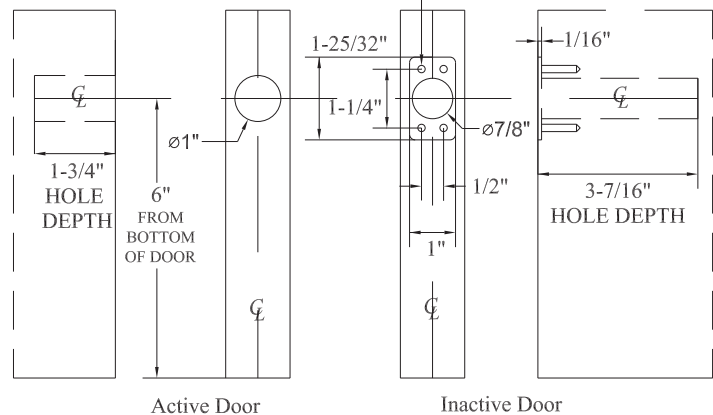
4. Install Cover Plate over Cam Housing and secure with supplied two mounting screws.



Note: If prepped holes are not perpendicular cam housing may bind. Break edge of the intersection of the 2 holes or file the edge of the vertical hold to ensure the noted dimension.



#29 DRILL (.136")
4 PLACES



BOTTOM FIRE BOLT INSTALLATION (used with the automatic flush bolt)

Inactive Door

1. Measure 6" from bottom of the inactive Door.
2. Drill a 7/8" dia. x 3-7/16" deep hole for Fire Bolt.
3. Install Fire Bolt by striking squarely with a hammer.

Active Door

1. Drill a 1" dia. x 1-3/4" deep hole for plug at the same height as the Fire Bolt.
2. Install plug in door by striking with a hummer.

IMPORTANT: The Fire Bolt will project during a fire. Do not cover with any edge mounted door hardware.

Not To Scale