



## VP9000 Series LOCKING PULLS

HALF HEIGHT • FULL HEIGHT • HORIZONTAL

## INTRODUCTION

Burns Manufacturing has been fabricating a full line of architectural door trim since 1965. By launching our VP9000 Locking Vertical Pull Series, we are providing an excellent locking option that is manufactured and assembled in the USA. Our main focus is to continually improve our designs so that we are able to offer outstanding value and quality for many years to come.

## Our VP9000 Series Locking Pulls

were designed with our customers in mind.

We combined our “Easy-to-Install” locking design with our heavy-duty type 304 Alloy Stainless material to make our 9000 series locking pulls a great choice when creating a clean-line door opening. Choose from a variety of our Vertical Pull options such as split finish, powder coat, or leather wrapped. All vertical pulls are “made to order”.



### Table of Contents

3	VP Options
4	Half Height Applications
6	Full Height Applications
8	Horizontal Push/Pull Bar Applications
10	Ordering Information

## Locking Pull VP OPTIONS

By combining modern design and manufacturing techniques with expert craftsmanship, we are able to produce a visually appealing yet durable and dependable pull handle. Our fabricating process provides the flexibility to customize to your specifications or create unique finishes, non-standard diameters and reliable mountings to complement distinctive architectural designs. All of our pulls meet or exceed BHMA industry standards.



### SF – Split Finish

This design supplies high-polished ends with a satin-finish center that offers an exciting modern look. The split finish helps conceal scratches that occur on a highly used entrance that demands high-polished pulls.

When ordering, add suffix “SF” behind the 9000 Series product number to receive this attractive option. **Example: VP9442SF-3**



### PC – Powder coat

Using an exterior grade powder with supreme UV test results, makes these pulls very durable for day-to-day use. It will also give your openings that new modern architectural look. Flat Black is our most popular color and other colors are available.

When ordering, add suffix “PC” behind the 9000 series product number to receive this option. **Example: VP9442PC-3**



### L – Leather Wrapped

Our leather-wrapped option is hand sewn here in Northwestern Pennsylvania with quality workmanship and the highest of standards. Featuring both interior and exterior applications, this option will surpass your expectations. We offer two types of leather – upholstery and bridle, and have two standard colors – brown and black. Other colors are available upon request.

When ordering, add suffix “L” behind the 9000 Series product number to receive this distinctive option. **Example: VP9442L-3**



## Features / Benefits

- Easy & fast installation
- Made of heavy duty material
- 3/8" to 7/8" thick glass doors
- 1-3/8" to 2-1/2" thick wood or metal doors
- Fits most standard rim cylinders
- Rim Cylinder, SFIC Housing, LFIC Housing, or less cylinder
- Bolt has 7/8" travel with adjustment
- Bolt can be made to work up, down, or both ways
- ADA Thumbturn
- Split Finish, Powder Coat, or Leather wrapped options
- Custom made to fit your requirements
- Made in the USA

## Half Height Single Bolt

### VP9042 Series Specifications

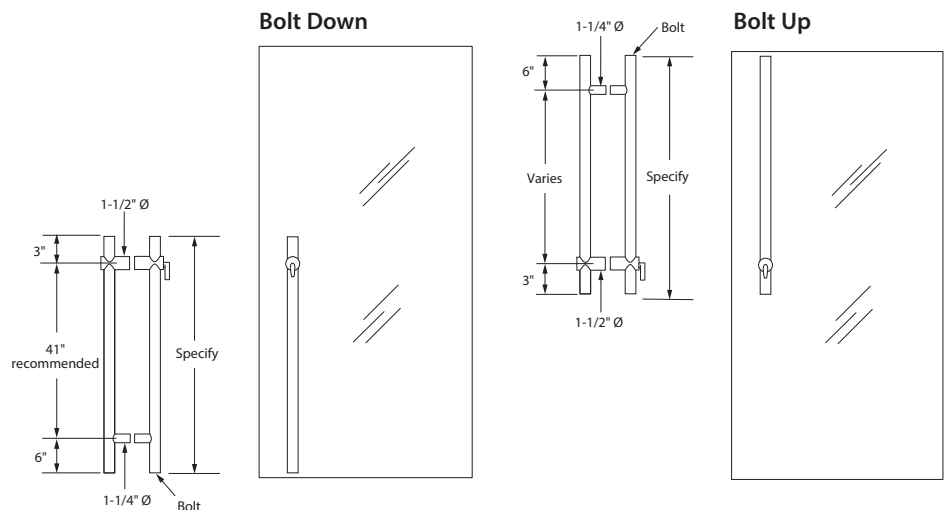
#### Half Height Pull - Single Bolt

VP9042-1 = Half Height Down - Bolt Down

VP9042-2 = Half Height Up - Bolt Up

#### NOTES:

- Cylinder must be 34" to 48" above finished floor to meet ADA requirements.
- 3/8" minimum clearance from finished floor - set at factory.
- All pulls are made to your requirements.



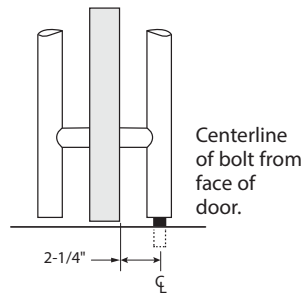
# Half Height Locking Pulls

## Applications

### Bolt Information

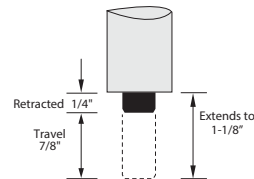
#### Bolt Location

- Available for 1-3/8" to 2-1/2" thick wood or metal doors.

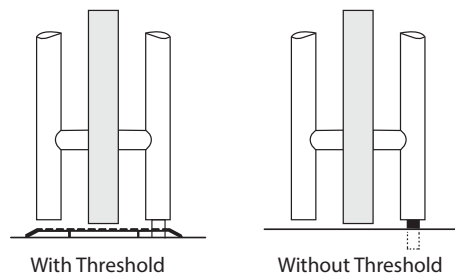


#### Adjustment

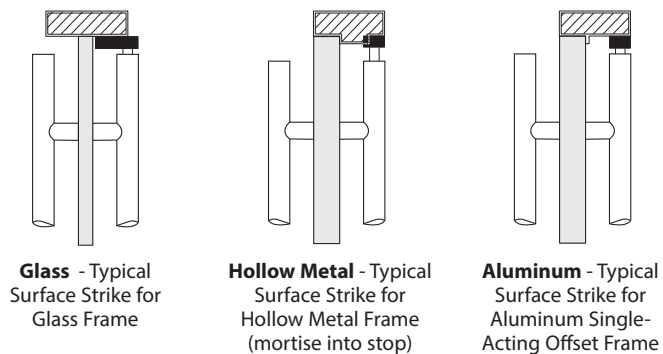
Can be adjusted 1/4" in or out from the factory setting of 1/4" as shown.



#### Bolt into Floor (Detail at Floor)



#### Bolt into Head (Detail at Head)

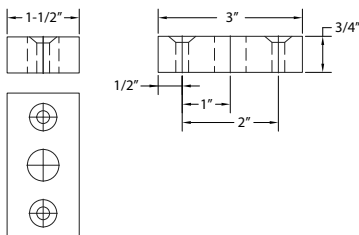


### Strike Options

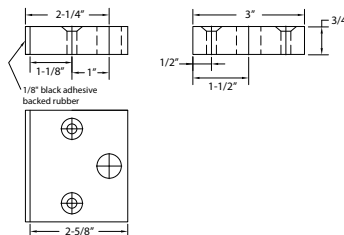
Recommended strikes shown below. Custom strikes are available upon request.

#### Top Strike Options

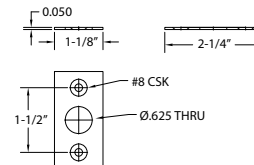
##### 901



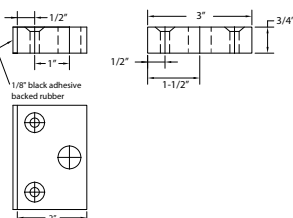
##### 902



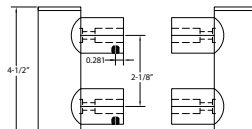
##### 903



##### 904

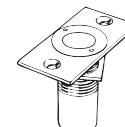


##### 905



#### Bottom Strike Option

##### 545



## Features / Benefits

- Easy & fast installation
- Made of heavy duty material
- 3/8" to 7/8" thick glass doors
- 1-3/8" to 2-1/2" thick wood or metal doors
- Fits most standard rim cylinders
- Rim Cylinder, SFIC Housing, LFIC Housing, or less cylinder
- Bolt has 7/8" travel with adjustment
- Bolt can be made to work up, down, or both ways
- ADA thumbturn
- Split finish, powder coat, or leather wrapped options
- Custom made to fit your requirements
- Made in the USA

## Full Height Single and Dual Bolt

### NOTES:

- Cylinder must be 34" to 48" above finished floor to meet ADA requirements.
- 3/8" minimum clearance from finished floor - set at factory.
- All pulls are made to your requirements.

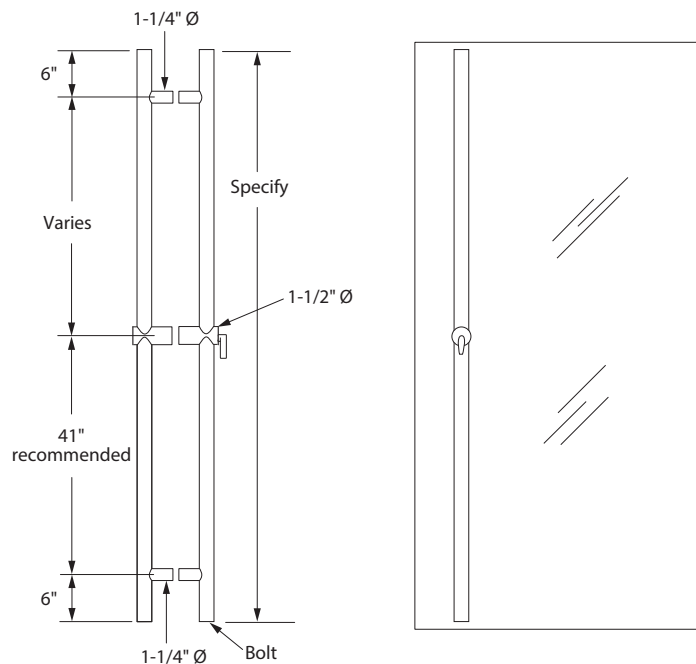
### VP9442 Series Specifications

#### Full Height Pull - Single and Dual Bolt Models

VP9442-1 = Full Height Down - Bolt Down

VP9442-2 = Full Height Up - Bolt Up

VP9442-3 = Full Height Both - Bolts Up and Down



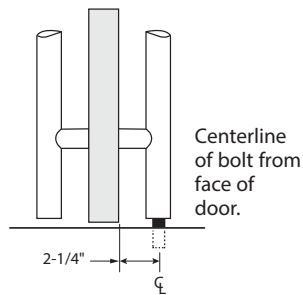
# Full Height Locking Pulls

## Applications

### Bolt Information

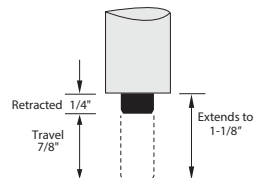
#### Bolt Location

- Available for 1-3/8" to 2-1/2" thick wood or metal doors.

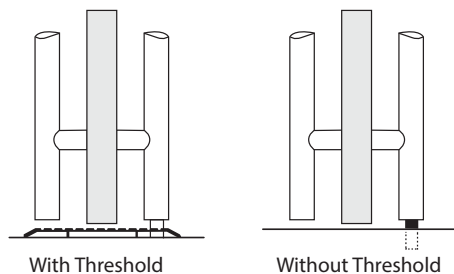


#### Adjustment

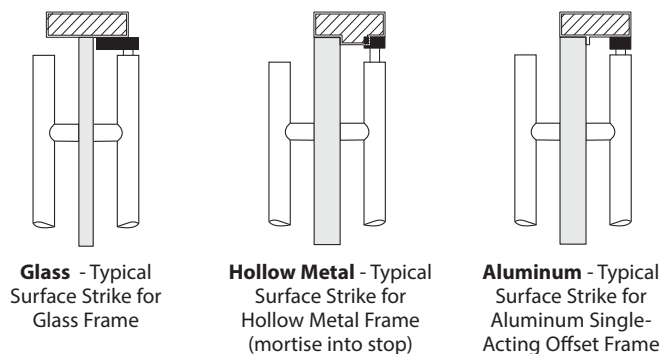
Can be adjusted 1/4" in or out from the factory setting of 1/4" as shown.



#### Bolt into Floor (Detail at Floor)



#### Bolt into Head (Detail at Head)

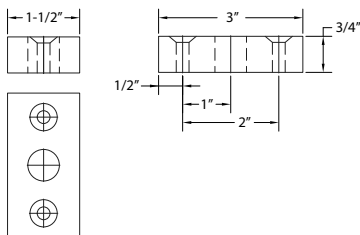


### Strike Options

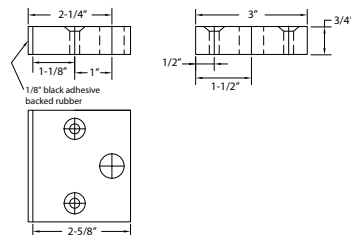
Recommended strikes shown below. Custom strikes are available upon request.

#### Top Strike Options

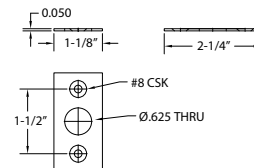
##### 901



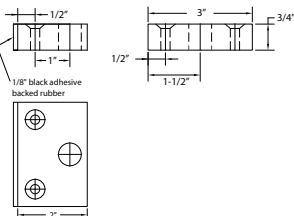
##### 902



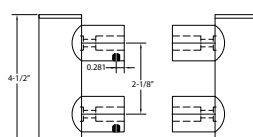
##### 903



##### 904

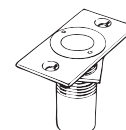


##### 905



#### Bottom Strike Option

##### 545



## Features / Benefits

- Easy & fast installation
- Made of heavy duty material
- Post mount design
- 3/8" to 7/8" thick glass doors
- 1-3/8" to 2-1/2" thick wood or metal doors
- Fits most standard rim cylinders
- Rim Cylinder, SFIC Housing, LFIC Housing, or less cylinder
- Bolt has 7/8" travel with adjustment
- Bolt can be made to work up or down
- ADA thumbturn
- Split finish, powder coat, or leather wrapped options
- Custom made to fit your requirements
- Made in the USA

## Horizontal Locking Pull Single Bolt

### VP9842 Series Specifications

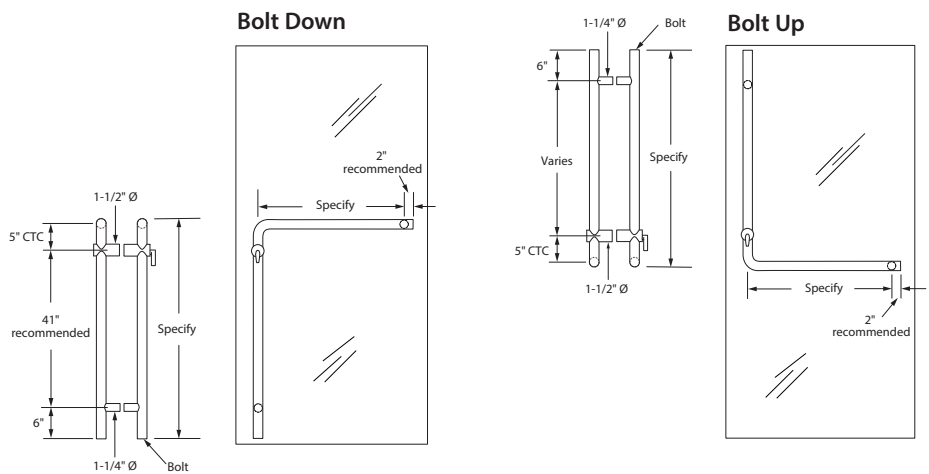
#### Horizontal Push/Pull - Single Bolt Models

VP9842-1 = Horizontal Down - Bolt Down

VP9842-2 = Horizontal Up - Bolt Up

#### NOTES:

- Cylinder must be 34" to 48" above finished floor to meet ADA requirements.
- 3/8" minimum clearance from finished floor - set at factory.
- All pulls are made to your requirements.



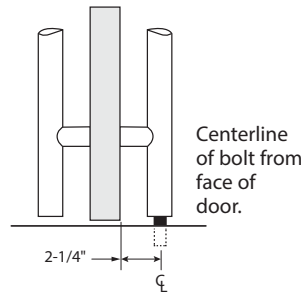


## Applications

### Bolt Information

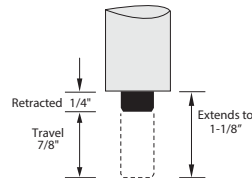
#### Bolt Location

- Available for 1-3/8" to 2-1/2" thick wood or metal doors.

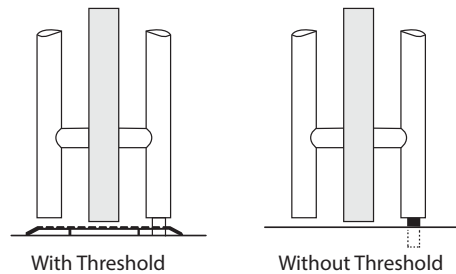


#### Adjustment

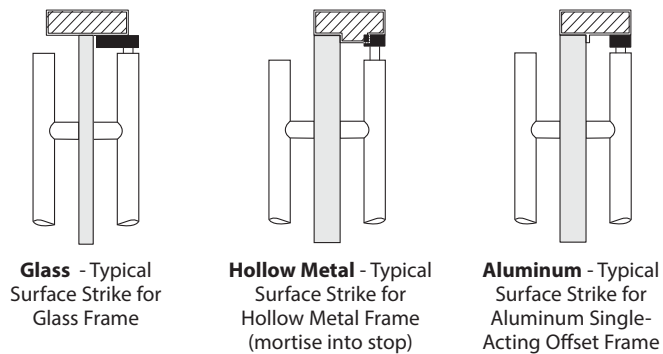
Can be adjusted 1/4" in or out from the factory setting of 1/4" as shown.



#### Bolt into Floor (Detail at Floor)



#### Bolt into Head (Detail at Head)

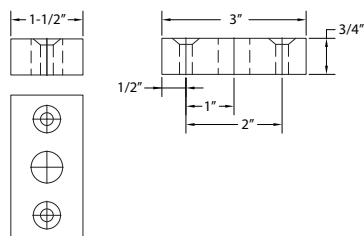


### Strike Options

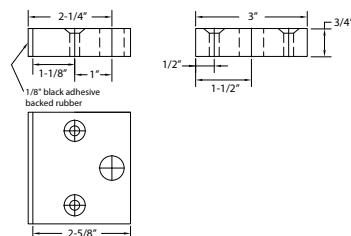
Recommended strikes shown below. Custom strikes are available upon request.

#### Top Strike Options

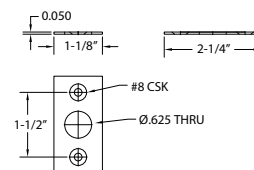
##### 901



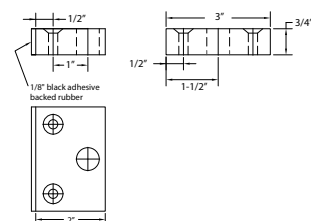
##### 902



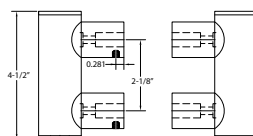
##### 903



##### 904

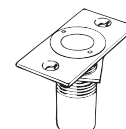


##### 905



#### Bottom Strike Option

##### 545





### Part Numbers

9042 Series Half Height	9442 Series Full Height	9842 Series Horizontal Push Bar
9042	9442	9842
9042L leather*	9442L leather	9842L leather
9042SF split finish	9442SF split finish	9842SF split finish
9042PC powder coat	9442PC powder coat	9842PC powder coat

*\* Black or Brown Upholstry leather or Bridle leather are stock colors. Other colors available upon request. Specify color when ordering.*

### Bolt Locking Locations

Code	Options
-1	Bolt Down
-2	Bolt Up
-3	Both Bolts Up and Down

### Finishes

Code	Description
US32D/630	Satin Stainless Steel
US32/629	Polished Stainless Steel
US10BPC	Dark Bronze Powder Coat - Exterior Grade
FBPC	Flat Black Powder Coat - Exterior Grade
PC	Powder Coat (Exterior Grade) (other colors available upon request)- Exterior Grade

## Ordering Information

### Cylinder Options

Code	Options
RC	Rim Cylinder
SFIC	SFIC Housing
LFIC	LFIC Housing
LC	Less Cylinder

### Strike Options

Bottom Strike	Top Strikes
545	901 (1-1/2" x 3" x 3/4")
	902 (2-1/4" x 3" x 3/4")
	903 (1-1/8" x 2-1/4" x .050")
	904 (2" x 3" x 3/4")
	905 (4-1/2" x 1-1/2" Dia.)

### Door Thickness

Glass Doors	Wood or Metal Doors
3/8" to 7/8"	1-3/8" to 2-1/2"



### Ordering Examples

Quantity	Part #	Bolt Location	Finish	Cylinder	Strike	DOOR		
						Thickness	Size	Clearance
2	VP9042	-1	US32D	RC	545	1-3/4"	83-1/4"	1/8" Top
3	VP9442	-3	US32D	LC	905	1/2"	83-1/4"	1/8" Top
4	VP9842	-2	US32D	SFIC	905	1/2"	83-1/4"	1/8" Top



Burns Manufacturing, Inc. | 2001 Lowell Avenue | Erie, PA 16506  
Website: [burnsmfg.com](http://burnsmfg.com) | Phone: **800.519.2610** | Fax: **800.432.8767**